



Southeast Fishery Bulletin

National Marine Fisheries Service, Southeast Regional Office, 263 13th Avenue South, St. Petersburg, Florida 33701-5505

FOR INFORMATION CONTACT:
727-824-5305, FAX 727-824-5308

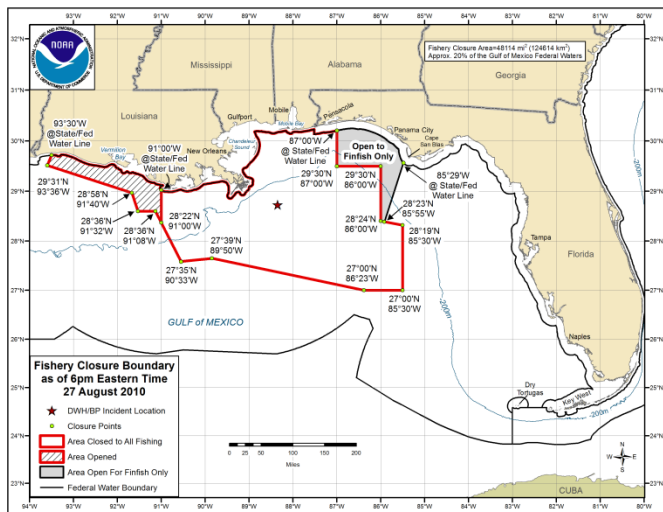
August 27, 2010
FB10-074

BP Oil Spill: NOAA Re-opens Federal Waters off Western Louisiana to Commercial and Recreational Fishing

Effective **August 27, 2010 at 6 p.m. eastern time** (5 p.m. central time), NOAA will reopen 4,281 square miles (11,088 sq km) of area it had previously closed to commercial and recreational fishing in the Gulf of Mexico in response to the BP/Deepwater Horizon oil spill.

The re-opened area was originally closed because oil was present in the area; however, no oil has been documented in the area since July 30, and only scattered light sheens since July 18. Trajectory models show the area is at a low risk for future exposure to oil. NOAA collected 41 shrimp and finfish samples from this area, including commercially and recreationally important species, such as snapper and menhaden. Sensory testing showed no detectable oil or dispersant odors or flavors in the samples, and the results of chemical analysis were well below levels of concern.

NOAA continues to work closely with the U.S. Food and Drug Administration and the states to ensure seafood safety, by closing fishing areas where tainted seafood could potentially be caught, and assessing whether seafood is tainted or contaminated to levels that pose a risk to human health. NOAA and FDA are working together to sample seafood from inside and outside the closure area, as well as dockside- and market-based sampling.



Map Link:

http://sero.nmfs.noaa.gov/sf/deepwater_horizon/BP_OilSpill/FisheryClosureMap_082710.pdf

The area closed to all fishing now measures 48,114 sq mi (124,614 sq km) and covers about 20% of the Gulf of Mexico exclusive economic zone. All commercial and recreational fishing including catch and release is prohibited in this closed area. An area off the Florida panhandle has been reopened to finfish, but remains closed to other species, such as shrimp. Transit through the closed area is allowed. NOAA will continue to evaluate the need for fisheries closures based on the evolving nature of the spill and will re-open closed areas as appropriate.

The area closed to all fishing is bounded by rhumb lines connecting, in order, the following coordinates:

North latitude	West longitude
At state/federal line	87° 00'
29° 30'	87° 00'
29° 30'	86° 00'
28° 24'	86° 00'
28° 19'	85° 30'
27° 00'	85° 30'
27° 00'	86° 23'
27° 39'	89° 50'
27° 35'	90° 33'
28° 22'	91° 00'
At the state/federal line	91° 00'
Follow the state/federal water line easterly to beginning point	

The area reopened to finfish harvest only is bounded by rhumb lines connecting, in order, the following coordinates:

North latitude	West longitude
At state/federal line	85° 29'
28° 23'	85° 55'
28° 24'	86° 00'
29° 30'	86° 00'
29° 30'	87° 00'
At the state/federal line	87° 00'
Follow the state/federal water line easterly to beginning point	

Reminders

Modeling and mapping the actual and projected spill

Ways to Receive Closure Information:

- Sign up for Southeast Fishery Bulletins: send an email to: SERO.Communications.Comments@noaa.gov
- Call 1-800-627-NOAA (1-800-627-6622) to hear a recording of the current coordinates (with messages in Spanish and Vietnamese)
- Listen to NOAA Weather Radio for updates
- Sign up for text messages on your cell phone: text **fishing@gulf** to 84469 (for more information, visit <http://www.deepwaterhorizonresponse.com/go/doc/2931/558107>)
- Follow us on Twitter: usnoaagov to get a tweet when the closed area changes

area is not an exact science. NOAA Fisheries Service strongly advises fishermen not to fish in areas where oil or oil sheens (very thin layers of floating oil) are present, even if those areas are not currently closed to fishing.

If state waters are closed to fishing due to the oil spill, all vessels must comply with that closure. If state waters are not closed to fishing due to the oil spill, federally permitted vessels may fish in those waters while abiding by all other applicable regulations.

Permit holders are reminded to maintain their federal vessel permits by submitting timely reporting requirements and renewal applications, even if the vessel is not currently engaged in fishing activities.

Links for more information:

Southeast Regional Office's Web page:

http://sero.nmfs.noaa.gov/deepwater_horizon_oil_spill.htm

NOAA's National Ocean Service

<http://response.restoration.noaa.gov>

Deepwater Horizon Response

<http://www.deepwaterhorizonresponse.com>

Fishermen who wish to contact BP about a claim should call 1-800-440-0858.