



# Southeast Fishery Bulletin

National Marine Fisheries Service, Southeast Regional Office, 263 13<sup>th</sup> Avenue South, St. Petersburg, Florida 33701-5505

FOR INFORMATION CONTACT:  
727-824-5305, FAX 727-824-5308

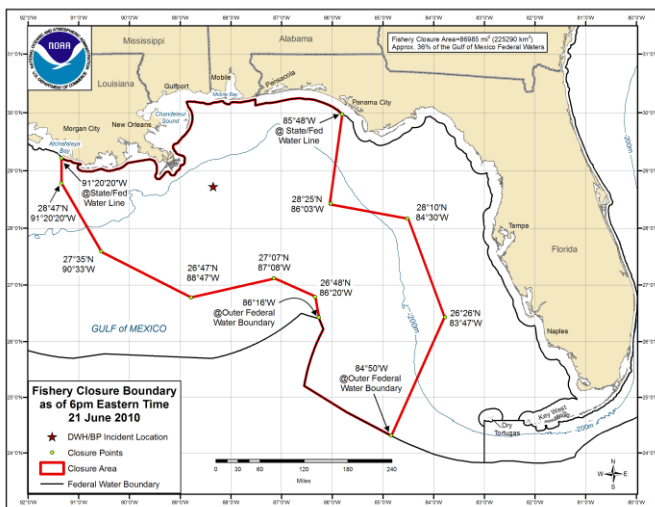
June 21, 2010  
FB10-055

## BP Oil Spill: NOAA Modifies Commercial and Recreational Fishing Closure in the Oil-Affected Portions of the Gulf of Mexico

Current revisions to the closure, described below, will be effective on **June 21, 2010 at 6 p.m. eastern time** (5 p.m. central time). All commercial and recreational fishing including catch and release is prohibited in the closed area; however, transit through the area is allowed.

or oil sheens (very thin layers of floating oil) are present, even if those areas are not currently closed to fishing.

The closed area is bounded by rhumb lines connecting, in order, the following coordinates:



| North latitude  | West longitude |
|---|----------------|
| At state/federal line   | 85° 48'        |
| 28° 25'   | 86° 03'        |
| 28° 10'   | 84° 30'        |
| 26° 26'   | 83° 47'        |
| At outer federal line   | 84° 50'        |
| Follow the outer boundary of federal waters northerly to...     |                |
| The outer federal line  | 86° 16'        |
| 26° 48'   | 86° 20'        |
| 27° 07'   | 87° 08'        |
| 26° 47'   | 88° 47'        |
| 27° 35'   | 90° 33'        |
| 28° 47'   | 91° 20'20"     |
| At the state/federal line                                       | 91° 20'20"     |
| Follow the state/federal water line easterly to beginning point |                |

Map Link:

[http://sero.nmfs.noaa.gov/sf/deepwater\\_horizon/BP\\_OilSpill\\_FisheryClosureMap\\_062110.pdf](http://sero.nmfs.noaa.gov/sf/deepwater_horizon/BP_OilSpill_FisheryClosureMap_062110.pdf)

The closure measures 86,985 sq mi (225,290 sq km) and covers about 36% of the Gulf of Mexico exclusive economic zone. The majority of federal waters in the Gulf of Mexico are open to commercial and recreational fishing.

Modeling and mapping the actual and projected spill area is not an exact science. NOAA Fisheries Service strongly advises fishermen not to fish in areas where oil

### Reminders

If state waters are closed to fishing due to the oil spill, all vessels must comply with that closure. If state waters are not closed to fishing due to the oil spill, federally permitted vessels may fish in those waters while abiding by all other applicable regulations.

Permit holders are reminded to maintain their federal vessel permits by submitting timely reporting requirements and renewal applications, even if the vessel is not currently engaged in fishing activities.

**Ways To Receive Closure Information:**

- Southeast Fishery Bulletins: to sign up send an email to: [SERO.Communications.Comments@noaa.gov](mailto:SERO.Communications.Comments@noaa.gov)
- Call 1-800-627-NOAA (1-800-627-6622) to hear a recording of the current coordinates
- Listen to NOAA Weather Radio for updates
- Text messages on your cell phone: to sign up text **fishing@gulf** to 84469 (for more information visit <http://www.deepwaterhorizonresponse.com/go/doc/2931/558107>)
- Follow us on Twitter: usnoagov to get a tweet when the closed area changes

**Links for more information:**

**Southeast Regional Office's Web page:**

[http://sero.nmfs.noaa.gov/deepwater\\_horizon\\_oil\\_spill.htm](http://sero.nmfs.noaa.gov/deepwater_horizon_oil_spill.htm)

**NOAA's National Ocean Service**

<http://response.restoration.noaa.gov>

**Deepwater Horizon Response**

<http://www.deepwaterhorizonresponse.com>

Fishermen who wish to contact BP about a claim should call 1-800-440-0858.