

Lagniappe

September 2018 • Volume 42, No. 9

The Other Snapper

Big and burly with a mean set of teeth, the Cubera snapper (*Lutjanus cyanopterus*) is a bruiser of the reef. They can reach an impressive five feet in length, and the IGFA All-Tackle World Record stands at 124 pounds and 12 ounces. The fish was caught on the Garden Banks off the coast of Louisiana.

Mature Cubera snapper tend to gravitate towards structure such as reefs or oil rigs, but while they are young they resemble Mangrove snapper and are found mainly inshore over seagrass beds or in mangroves. Spawning adults congregate at a select few spawning sites in the Gulf and the Caribbean where up to 10,000

fish may gather for the event. The predictability of their spawning behavior makes them potentially easy targets for overfishing, and as a result they are listed as vulnerable to becoming endangered.

They are a long-lived fish with scientists recording ages of up to 30 years.

In Louisiana, the best time to target this species is said to be July through to mid-September. Live fish or crab makes excellent bait, and heavy tackle should be used when targeting these tough fighters especially when fishing around foul structure. They make fine eating although the flesh of large specimens tends to be coarse.

– Damen Pheiffer

Sources:

<https://www.igfa.org/species/222-snapper-cubera.aspx?CommonName=222-snapper-cubera.aspx>

<http://www.iucnredlist.org/details/12417/0>

<http://www.louisianasportsman.com/details.php?id=11472>

<https://www.nationalgeographic.com/animals/fish/c/cubera-snapper/>

Photo: Via Tsuji, Creative Commons

Louisiana Recreational Red Snapper Landings Estimates through Aug. 12

The latest preliminary landings statistics for recreational red snapper recorded by LA Creel, the Louisiana Department of Wildlife and Fisheries' (LDWF) near real-time landings data collection program, are 737,299 pounds, or 98 percent of Louisiana's annual private recreational allocation of 743,000 pounds, through Aug. 12.

The recreational red snapper season closed on Sunday, Aug. 12, and no further recreational harvest is allowed at this time.

For more information on the 2018 recreational red snapper season and detailed landing estimates, visit:

wlf.louisiana.gov/red-snapper.

2018-19 Louisiana Oyster Season

The 2018-19 oyster season was set based on the annual oyster stock assessment provided by LDWF biologists and comments received from members of the public, including the oyster industry.

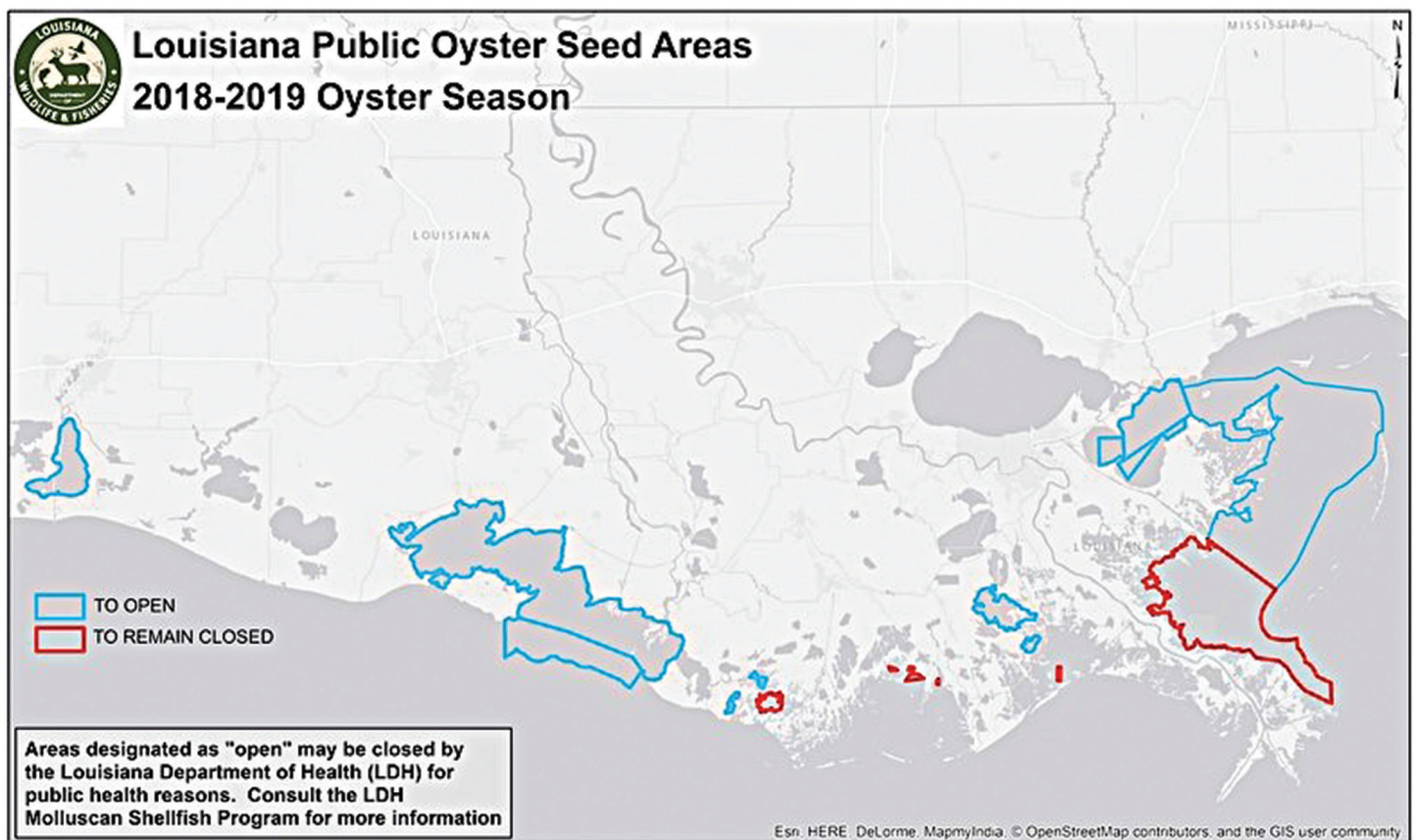
The following dates were set for the upcoming oyster season:

Monday, Oct. 29, 2018 - All Public Oyster Seed Grounds east of the Mississippi River north of the Mississippi River Gulf Outlet (LDH Shellfish Harvest Areas 1-4); Little Lake Public and Lake Mechant Oyster Seed Grounds; Hackberry Bay and Bay Junop Public Oyster Seed Reservations; Vermilion/East and West Cote Blanche Bay/Atchafalaya Bay Public Oyster Seed Grounds; and the Calcasieu Lake Public Oyster Area will open at one half-hour before sunrise.

Tuesday, Oct. 30, 2018 - The following areas will close to seed harvest at one half-hour after sunset on Oct. 29 but remain open as sacking-only areas starting at one half-hour before sunrise on Oct. 30: All Public Oyster Seed Grounds East of the Mississippi River north of the Mississippi River Gulf Outlet (LDH Shellfish Harvest Areas 1-4); Little Lake Public and Lake Mechant Oyster Seed Grounds; Hackberry Bay and Bay Junop Public Oyster Seed Reservations; and the Vermilion/East and West Cote Blanche Bay/Atchafalaya Bay Public Oyster Seed Grounds.

Additional provisions and closures are available at www.wlf.louisiana.gov/fishing/oyster-season.

Public notice of any opening, delay, or closure of a season will be provided at least 72 hours prior to such action, unless such closure is ordered by the Louisiana Department of Health for public health concerns.



Aware of West Indian Manatees

Manatee sightings have been reported throughout coastal Louisiana as these marine mammals migrate from Florida to Louisiana during summer months, and LDWF has placed caution signs at boat launches throughout south Louisiana.

The caution signs are located from Cameron and Calcasieu parishes in southwest Louisiana across the state to St. Tammany, St. Bernard and Plaquemines parishes in southeast Louisiana. Manatees have been seen in Louisiana marshes, as well as freshwater rivers and lakes in the southern part of the state.

The West Indian manatee is a federally threatened species. It is illegal to touch, harass or harm them. Manatees were down-listed from endangered to threatened in 2017 because of an increase in manatee populations and the success of conservation and habitat restoration efforts.

“Our primary concern is manatees being injured by boat propellers,” said Keri Lejeune, LDWF’s endangered species biologist. “Manatees are slow-moving, curious animals. If a manatee is spotted while boating, boaters should idle and disengage propellers until the animal is at a safe distance and out of harm’s way. The manatee caution signage will help alert boaters and the public that manatees can be found in Louisiana waters and provides contact information to report sightings to LDWF.”

West Indian manatees do not live in Louisiana year round. They are a transient species in Louisiana and native to Florida. They periodically travel along the northern Gulf Coast from Florida during the summer months toward Alabama, Mississippi, Louisiana and Texas and may spend some time during the summer in Louisiana.

Manatees need warm water to survive and do not thrive well in water temperatures below 68 degrees for extended periods of time. Manatees that travel to Louisiana should begin the journey back to Florida in early fall.

Any manatee sighting information, with pictures and video footage, if possible, should be reported to LDWF’s 24-hour hotline at 1-800-442-2511, or to Keri Lejeune, endangered species biologist, at klejeune@wlf.la.gov. Sighting information allows LDWF biologists to track waterways in Louisiana that are used by manatees and to respond promptly if a manatee is injured and for potential rescue efforts.



Manatee photo courtesy of LDWF

Commercial Crab Regulation Reminder

Fishermen may not harvest any female crabs in the berry stage (when they are carrying eggs or young attached to the abdomen). Egg bearing crabs must be immediately returned to the water without injury to protect this next generation of crabs.

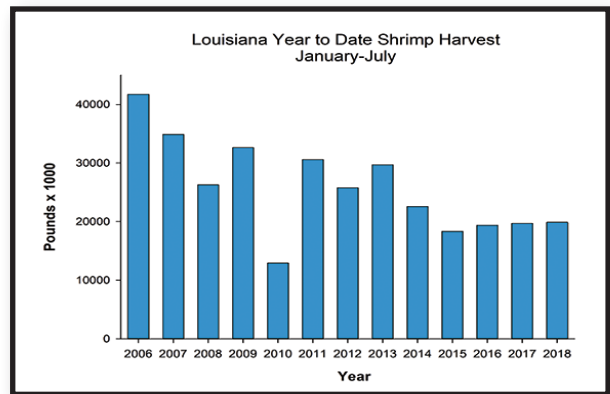
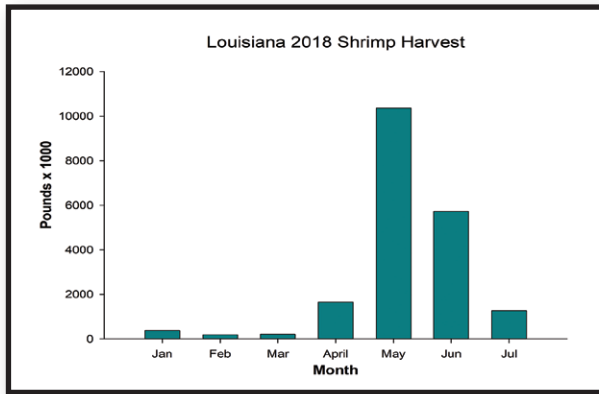
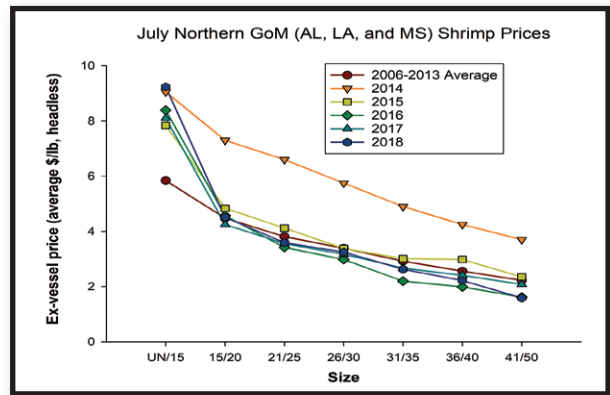
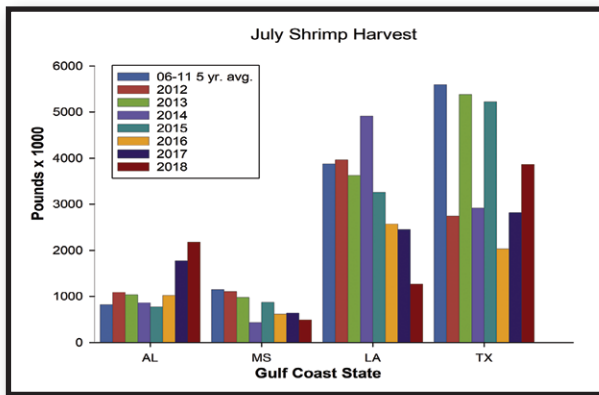
However, a legally licensed commercial fisherman may have, in the fisherman’s workbox only, an incidental take of not more than two percent total crabs in the berry stage.

Violating crab possession limits could result in up to a \$950 fine, 120 days in jail and have crabs and equipment seized.

Louisiana Shrimp Watch

Louisiana specific data portrayed in the graphics are selected from preliminary data posted by NOAA on its website. All data portrayed are subject to final revision and approval by NOAA. Shrimp landings are ex-vessel prices, inclusive of all species harvested. Missing, inadequate or withheld reports are portrayed as “zero” in these graphics. Price graphics reflect central Gulf states only (Texas and Florida are reported independently).

For more information, please refer to: www.st.nmfs.noaa.gov/st1/market_news/index.html.



Fish Gear Coordinates – July 2018

In accordance with the provisions of R.S. 56:700.1 et. seq., notice is given that eight claims in the amount of \$28,279.93 were received for payment during the period July 1-31, 2018.

There were eight paid and zero denied.

Latitude/Longitude Coordinates, in degree decimal minutes, of reported underwater obstructions are:

29 07.959..... 90 33.444..... TERREBONNE
 29 17.862..... 89 42.402 PLAQUEMINES
 29 18.252..... 89 55.939..... JEFFERSON
 29 20.125..... 89 52.731..... PLAQUEMINES
 29 35.164..... 90 05.076..... JEFFERSON
 29 40.859..... 92 53.276..... CAMERON
 29 50.000..... 90 15.410..... SAINT CHARLES
 30 01.420..... 89 15.180..... SAINT BERNARD

A list of claimants and amounts paid can be obtained from Charles Reulet, administrator, Fishermen's Gear Compensation Fund, P.O. Box 44487, Baton Rouge, LA 70804, or you can call (225) 342-7591.

Important Dates & Upcoming Events

Aug. 12, 2018: Louisiana Recreational Red Snapper State Season Closed

Aug. 16, 2018: Louisiana Recreational Gray Triggerfish Season Closed

Aug. 17, 2018: Gulf of Mexico Recreational Gray Triggerfish Season Closed

Jan. 30, 2019: Beyond the Boat – Seafood Processing Conference

Fall Shrimp Season:

Aug. 13, 2018 (6 p.m.):

The portion of state inside waters from the Mississippi/Louisiana state line westward to the Atchafalaya River Ship Channel at Eugene Island as delineated by the River Channel Buoy Line to open at.

Aug. 13, 2018 (6 a.m.):

The portion of state inside waters from the Atchafalaya River Ship Channel at Eugene Island as delineated by the River Channel Buoy Line westward to the western shore of Freshwater Bayou.

Aug. 27, 2018 (6 a.m.):

The portion of state inside waters from the western shore of Freshwater Bayou westward to the Louisiana/Texas state line.

THE GUMBO POT

CAFISH FINGERS

Recipe courtesy of *Louisiana Kitchen & Culture*.

For more recipes or to subscribe to their magazine or free newsletter, please visit <http://louisiana.kitchenandculture.com/>



Ingredients:

1 c. course ground or yellow mustard	1/2 c. all-purpose flour
1 egg white lightly beaten	1/2 tsp. salt
2 tsp. Tabasco Pepper sauce	1/4 tsp. black pepper
1 1/2 lbs. Louisiana catfish fillets, cut into bite size strips	1 quart vegetable oil
1/2 c. yellow cornmeal	

Method:

In a large bowl stir together mustard, egg whites and Tabasco sauce. Add the fish fillets and coat well. Cover and marinate for 1 hour. In a shallow dish mix together corn meal, flour, salt and pepper. Pour the oil into a heavy 3 quart sauce pan or deep fryer. Fill it no more than one third full and heat over medium heat to 350°F. Dredge the fish in corn meal mixture, shake off excess and add to oil. Do 2 or 3 pieces at a time and cook for 2 minutes or until golden brown. Remove and drain on paper towels. Serve the catfish hot with spicy mayonnaise, cocktail sauce, or tartar sauce.

Be sure to visit the *Lagniappe* blog for additional news and timely events between issues.
<https://louisianalagniappe.wordpress.com/>

Lagniappe Fisheries Newsletter

Editor: Julie Lively

Web coordinator: Melissa Castleberry

Copy editor: Roy Kron



For more information, contact your local extension agent:

Thu Bui

Assistant Extension Agent, Fisheries
St. Mary, Iberia, and Vermilion Parishes
Phone: (337) 828-4100, ext. 300
tbui@agcenter.lsu.edu

Nicole Lundberg

Area Agent – Fisheries/Coastal Issues
Lafourche and Terrebonne Parishes
Phone: (985) 873-6495
nlundberg@agcenter.lsu.edu

Carol D. Franze

Marine Agent
Southeast Region
Phone: (985) 875-2635
cfranze@agcenter.lsu.edu

Kevin Savoie

Area Agent (Southwest Region)
Natural Resources-Fisheries
Phone: (337) 475-8812
ksavoie@agcenter.lsu.edu

Albert 'Rusty' Gaudé

Area Agent, Fisheries
Jefferson, Orleans, St. Charles and St. John Parishes
Phone: (504) 433-3664
agaude@agcenter.lsu.edu

Dominique Seibert

Area Agent - Coastal Advisor
Plaquemines and St. Bernard Parishes
Phone: (504) 433-3664
dseibert@agcenter.lsu.edu

Thomas Hymel

Watershed Educator
Iberia, St. Martin, Lafayette, Vermilion,
St. Landry, & Avoyelles Parishes
Phone: (337) 276-5527
thymel@agcenter.lsu.edu

Mark Shirley

Area Agent (Aquaculture & Coastal Resources)
Jefferson Davis, Vermilion, Acadia, St. Landry,
Evangeline, Cameron, Calcasieu, Lafayette,
Beauregard, & Allen Parishes
Phone: (337) 898-4335
mshirley@agcenter.lsu.edu

We would like to hear from you! Please contact us regarding fishery questions, comments or concerns you would like to see covered in the Lagniappe. Anyone interested in submitting information, such as articles, editorials or photographs pertaining to fishing or fisheries management is encouraged to do so.

Please contact Lagniappe editor Julie Lively at janderson@agcenter.lsu.edu

Julie A. Lively

Associate Professor
LSU Agcenter & Louisiana Sea Grant
114 RNR Building
Baton Rouge, LA 70803
Phone: 225-578-0771
Fax: 225-578-4227
janderson@agcenter.lsu.edu