



## Cameron Shrimp Summit

The current shrimp crisis will be the focus of a Shrimp Summit which will be held in Cameron. The meeting will take place in the Cameron Courtroom on September 16 beginning at 6:00 p.m. The meeting is sponsored by the LSU AgCenter/Sea Grant program, and features representatives from the Louisiana Recovery Authority, Louisiana Department of Wildlife and Fisheries, Integrated Marine Systems, Louisiana Seafood Promotion and Marketing Board and the Cameron Parish Police Jury Office of Economic Development.

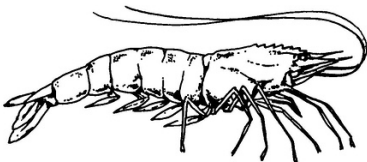
Since the early 1980s, global production of shrimp has increased dramatically, especially aquaculture produced shrimp. World production (both aquaculture and wild capture) of shrimp expanded from 3.4 billion pounds in 1980 to 13.4 billion pounds in 2005. The increases in production were particularly pronounced in the mid to late 1990s. This worldwide increased production translates into an average increase of over 400 million pounds annually since the 1980s. To put this into perspective, Louisiana's average annual shrimp production is approximately 100 million pounds.

The United States is the largest importer of shrimp in the world. This, along with a decline in world market price has caused the price paid to U.S. shrimp harvesters to drop since the 1980s (real dockside prices-deflated). The combination of reduced prices, increased fuel and supply costs and the current economic situation has caused significant hardship to the shrimp industry.

The Shrimp Summit will cover several aspects of the current crisis including, recent history and trends in the shrimp industry, world shrimp production and the global economy, long term plans and short term plans for the industry as well as local projects to stabilize the shrimp industry.

**Source:** The Southeast USA Shrimp Industry: Issues Related to Trade and Antidumping Duties. Keithly, Walter and Poudel, Pawan. Louisiana State University.

- Kevin A. Savoie



## Elmer's Island Trash Bash Sept. 19

Mark Saturday, Sept. 19, on your calendar and come out and join forces with other dedicated volunteers to clean the beaches of Elmer's Island. Together with community stakeholders, the Louisiana Department of Wildlife and Fisheries (LDWF), along with a multitude of project partners, is hosting an Elmer's Island Trash Bash.

Elmer's Island is the state's newest wildlife refuge, located on the shores of the Gulf of Mexico across Caminada Pass from Grand Isle in Jefferson Parish. The beach clean-up will begin at 8 a.m.

The goal of the event is a litter-free beach that the public can enjoy. All citizens, social organizations and civic groups are invited to participate. Event organizers include LDWF, Barataria-Terrebonne National Estuary Program (BTNEP), East Ascension Sportsman's League, Grand Isle Port Commission, LSU AgCenter, Louisiana Wildlife Federation and Louisiana Sea Grant.

To register, visit BTNEP's volunteer Web site, <http://volunteer.btneep.org>, complete the form provided, and either mail or fax it to BTNEP public involvement coordinator Mel Landry using the contact information listed on the form. Volunteers are asked to report to the staging area, where they will be assigned to a designated sector and receive trash collection procedures. All supplies including bug spray, trash bags, gloves and water will be provided to volunteers for the event.

The public can enter Elmer's Island Wildlife Refuge via an access road connecting Hwy. 1 to the refuge beach area. To avoid excess traffic on the Elmer's Island access road and to minimize the numbers of vehicles on the beach, carpooling to the event is encouraged.

This event is made possible through generous contributions and support by LDWF sponsors. Volunteers will enjoy both a complimentary lunch and breakfast, sponsored by the Grand Isle Community Development Team and Shaw Coastal.

The department is proud of the volunteers and businesses that support LDWF's mission of educating and engaging individuals to take responsibility for improving their community environment through litter prevention, waste reduction, education and beautification.

The event is registered with the Ocean Conservancy's International Coastal Cleanup, which has been held on the third Saturday of September for the past 23 years. At last year's cleanup, nearly 400,000 volunteers collected more than 6.8 million pounds of trash in 100 countries and 42 U.S. states.

In addition to the scheduled clean up effort, the Coalition to Restore Coastal Louisiana and the Crescent Soil Water Conservation District recently planted approximately 5,000 pots of marsh hay cordgrass and bitter panicum along the shorelines of the island. This new vegetation will assist in stabilizing and capturing sand to build dunes. The project will also create wildlife habitat, increase species diversity and provide a seed source for natural regeneration.

Funding for vegetative protective fencing has been provided by Daybrook Fisheries Inc. and Omega Protein Inc. The fencing is designed to prevent disturbance to the ground, and the new vegetation and will also encourage sand deposition to aid in the creation of dunes. Installation of the fencing will take place within weeks.

For volunteer and event registration information, please contact Mel Landry at BTNEP at (985) 447-0868 or at [Mel@BTNEP.org](mailto:Mel@BTNEP.org). For other Elmer's Island Trash Bash information, contact Mandy Tumlin with the Louisiana Department of Wildlife and Fisheries at (225) 765-2377 or [mtumlin@wlf.la.gov](mailto:mtumlin@wlf.la.gov).

## Volunteers Sought for Cameron Beach Restoration

The Coalition to Restore Coastal Louisiana and Cheniere Energy invite you to participate in a marsh restoration project along the Cameron Shoreline (near Johnson Bayou). This area provides essential protection for our inland communities and wetlands and has been severely impacted by Hurricanes Rita and Ike. Volunteers will plant vegetation which will assist in stabilizing and capturing sand in the hopes of building dunes. In addition, the project will also create wildlife habitat, increase species diversity and provide a seed source for natural regeneration.

This project is being completed through a partnership with Cheniere Energy, Coalition to Restore Coastal Louisiana and Restore America's Estuaries. Thanks to the commitment of Cheniere Energy, the Coalition will plant approximately 5,000 pots of seashore paspalum and bitter panicum along the beach.

Where: Cameron Shoreline (maps will be sent to volunteers once registered)

When: Saturday, September 19, 2009  
8:30 am to approximately 4:00 pm

All planting equipment (gloves, shovels, dibbles, etc.) will be furnished. Lunch and drinks will be provided to all volunteers.

Additional information will be provided to volunteers after registration. To register, visit <https://www.thedatabank.com/dpg/316/mtglist.asp?formid=event> or contact Coalition to Restore Coastal Louisiana, 6160 Perkins Road, Suite# 225, Baton Rouge, La. 70808 or call (225)767-4181, toll-free:(888) 522-6278, or e-mail [coalition@crcl.org](mailto:coalition@crcl.org).

## Individual Fishing Quota (IFQ) Program for Groupers, Tilefishes and Other Changes

On July 2, 2009, NOAA Fisheries Service approved Amendment 29 addressing new commercial regulations for Gulf of Mexico reef fish. A final rule implementing these regulations published in the *Federal Register* on Aug. 31, 2009. The rule establishes a grouper and tilefish IFQ program for commercial fishermen in the Gulf of Mexico, establishes design elements of the IFQ program, makes changes to the red snapper IFQ program to align that program with the grouper and tilefish IFQ program, allows consolidation of reef fish commercial vessel permits, and establishes dual classifications for speckled hind and Warsaw grouper. Most provisions of the rule are effective Jan. 1, 2010; however, some provisions will be effective earlier to allow for operations required prior to implementation.

### Lagniappe Fisheries Newsletter

Editor: Glenn Thomas

Web coordinator: Melissa Dufour

Copy editor: Roy Kron

Layout/design: Jessica Schexnayder

### *The Grouper and Tilefish IFQ Program*

The grouper and tilefish IFQ program was created to address overcapitalization of the grouper and tilefish fleet. The IFQ program divides grouper and tilefish quotas among commercial fishermen. IFQ shares are the percent of the quotas assigned to each fisherman. Allocation is the pounds of fish each fisherman has the opportunity to harvest each year. If a quota changes, a fisherman's shares will not change but his allocation will. The fisherman can choose when to fish for his allocation, considering market and safety issues.

#### *Design Elements of the IFQ program:*

- The administrative functions associated with this program (e.g., registration and account setup, landing transactions, and transfers) are designed to be accomplished online; therefore, a participant must have access to a computer and the Internet.
- Initial IFQ shares will be distributed to commercial reef fish permit holders on record Oct. 1, 2009. Individuals acquiring a permit after Sept. 30 will not receive shares associated with that permit.
- Shares will be distributed proportionately among eligible participants based on landings during 1999-2004, with an allowance for dropping one year.
- Five species-specific share types will be set: red grouper, gag, other shallow water grouper (other SWG), deepwater grouper (DWG), and tilefish shares.
- Four percent of red grouper allocation and 8 percent of gag grouper allocation will be converted into multiuse allocation valid for harvesting red or gag grouper, with restrictions.
- Transfer of shares and allocation will be restricted to commercial reef fish permit holders during the first five years, but not thereafter.
- Separate share caps will be set for each type of IFQ share equal to the maximum share initially assigned to an IFQ participant. A cap on total annual allocation will be set equivalent to the share caps.
- A proportional adjustment strategy will be used to distribute commercial quota adjustments and reallocation among IFQ shareholders.
- The Regional Administrator will establish a formal appeals process and reserve three percent of the total available IFQ shares during the first year of the program for use in resolving disputes.
- IFQ share or allocation holders will be responsible for cost recovery fees and IFQ dealers will be responsible for fee collection and submission on a quarterly basis.
- Fishermen can select landing sites for IFQ programs, but the sites will require pre-approval by NOAA Fisheries Service Office for Law Enforcement.

### *Changes to the Red Snapper IFQ Program*

Changes include requiring a separate vessel account for each vessel, requiring the estimated gutted weight of fish to be stated on the landing notification, requiring preapproval of landing locations, allowing online share transfers, and eliminating vessel endorsements and annual ex-vessel value

reports. Southeast Fishery Bulletin, National Marine Fisheries Service, Southeast Regional Office, 263 13th Avenue South, St. Petersburg, Florida 33701-5505.

#### *Permit Consolidation*

Consolidation allows a commercial reef fish permit owner to consolidate several permits into one. The consolidated permit will have a catch history equal to the sum of the catch histories associated with the individual permits.

#### *Speckled Hind and Warsaw Grouper*

Dual classification provides more flexibility in the IFQ program because these species are caught in both shallow and deep water. Warsaw grouper and speckled hind are currently considered DWG species. For the purposes of the IFQ program, once a participant's DWG allocation has been landed and sold, or transferred, or if a participant has no DWG allocation, then other SWG allocation could be used to land and sell Warsaw grouper and speckled hind.

This bulletin serves as a Small Entity Compliance Guide, complying with section 212 of the Small Business Regulatory Enforcement Fairness Act of 1996. Copies of the final rule are available by contacting NOAA Fisheries Service's Southeast Regional Office at 263 13th Avenue South, St. Petersburg, Florida 33701. The final rule can be obtained in electronic form from the *Federal Register* Web site: <http://www.gpoaccess.gov/fr/index.html> (use advanced search for final rules using "AX39" as a keyword).

#### *Important Dates Associated With the Grouper and Tilefish IFQ Program*

<i>Date</i>	<i>Event</i>
October 1	Permit holders on record as of this date will receive IFQ shares (individuals acquiring a permit after this date will NOT receive shares for that permit)
Early Oct	Permit holders will receive a notification letter of estimated shares and allocation they will receive, plus instructions for participating in the IFQ program
November 1	Deadline for contacting NOAA Fisheries Service if notification letter is not received
November 15	Last day to submit landing locations for pre-approval by January 1
December 1	Deadline for contacting NOAA Fisheries Service to change the years used for initial qualification
December 1	Deadline for corporations with permits to submit corporate shareholder information
January 1	IFQ program starts
April 1	Last day to submit appeals

#### **Updated Information for Disaster Reimbursement Program**

The Louisiana Department of Wildlife and Fisheries (LDWF) announced a delay in the rendering of financial assistance to commercial fishermen who were affected by Hurricanes Gustav and Ike. Earlier this year, the department launched a \$30 million reimbursement program utilizing funds from a \$40 million appropriation allocated to the state for fisheries disaster assistance to the commercial fishing industry.

“We understand the dire needs of the industry in the current economic conditions and we commit to finding every possible means to streamline this process so that no further delays occur,” said LDWF assistant secretary Randy Pausina. “As always, our number one goal is to put the money in the hands of commercial fishermen as soon as possible.”

The delay results from complications during development of the database system used for tracking packet receipt and payments to fishermen and dealers. Initially, payments were scheduled to be issued within four to six weeks from the time completed forms were received by South Central Planning and Development Commission (SCPDC). Subsequently, the first batch of checks is scheduled to be mailed the week of Aug. 31, 2009. LDWF, which distributes the relief money, says its goal is to minimize the delay as much as possible and will distribute the money in the order in which the applications were received.

All receipts and invoices must be received or postmarked no later than Sept. 30, 2010, to be considered for reimbursement. Any questions should be directed to SCPDC by calling (800) 630-3791 (toll free) or (985) 655-1051, mailing SCPDC at P.O. Box 1240, Gray, LA 70359-9902, or visiting the SCPDC Web site at [www.scpdc.org/fisheriesassistance](http://www.scpdc.org/fisheriesassistance).

### **LDWF Stocking Port Sulphur Waterways**

The Louisiana Department of Wildlife and Fisheries (LDWF) is progressing rapidly in its effort to stock native fish species in the Port Sulphur area following a tilapia eradication effort using the fish toxicant rotenone. Earlier this summer, thousands of tilapia found in ditches and ponds in the area were euthanized.

Mark McElroy, LDWF biologist program manager, indicated that the rapid response was successful due to the commitment of a highly skilled departmental team along with the collaboration of the Department of Natural Resources, the Department of Environmental Quality, the Department of Ag and Forestry, Plaquemines Parish Government, as well as scientists from Louisiana State University, Nicholls State University, Tulane University and the University of New Orleans. The Barataria Terrebonne National Estuary Program, U.S. Fish and Wildlife Service and U.S. Army Corps of Engineers also provided assistance. LDWF assistant secretary Randy Pausina commended all parties involved by stating, “Both the cooperation and professionalism displayed by those who had a role in this effort is to be applauded.”

McElroy added, “The initial phase of the plan, conducted in early June and July, was to eradicate all fish in waters where tilapia were believed to exist. The department is now moving forward with implementing the final two phases of the plan which includes stocking native fish species and determining research needs to monitor the area for a minimum of two years for tilapia survival.

“From the outset, we knew our efforts to completely eradicate the established tilapia populations using chemical alone was at best somewhere between 90 and 99 percent. We believe we are very close to 99 percent. Now it is up to the native fish species we are stocking and the elements to carry the ball to reach our ultimate goal of 100 percent.”

Some of the predatory fish species being stocked by department employees include bowfin, mud catfish, spotted gar, alligator gar, largemouth bass and green sunfish. The fishing ban in this area is expected to remain in effect until stocking efforts are completed.

A majority of the monitoring process will be conducted by scientists from local universities. Their work will include fish sampling and water quality assessment both in and outside the treated area. McElroy explained, "This research will ultimately reveal how successful the rapid response efforts were in this instance and may provide insight into how we can improve future responses to aquatic invasive species introductions."

### **Gulf Council Seeks Members for New Data Collection Advisory Panel**

The Gulf of Mexico Fishery Management Council is forming a new advisory panel to define sector specific electronic data reporting systems requirements.

The new Ad Hoc Data Collection Advisory Panel will be comprised of knowledgeable sector representatives, including participants in the Marine Recreational Information Program development to ensure compatibility.

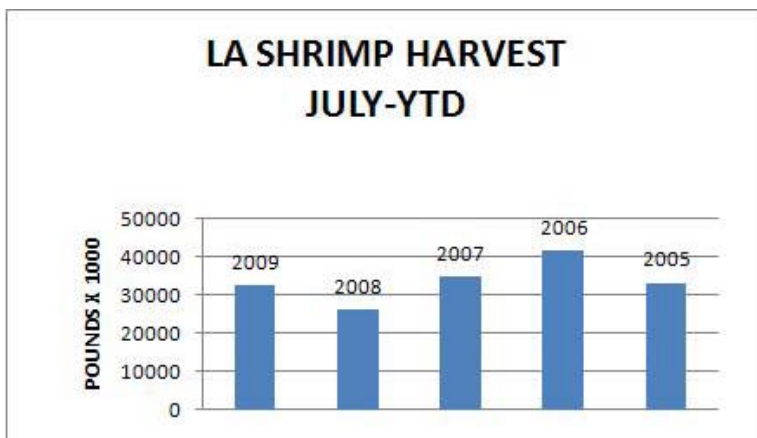
Expected time commitment is two to three, two-day meetings per year. Members are not compensated; however travel expenses are reimbursed.

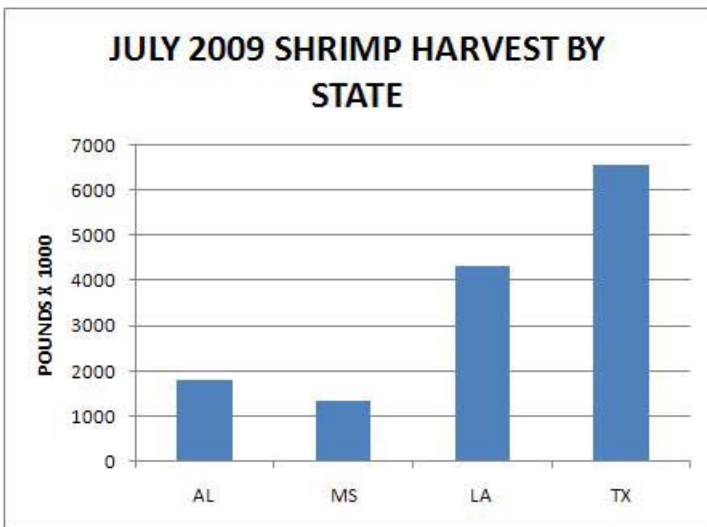
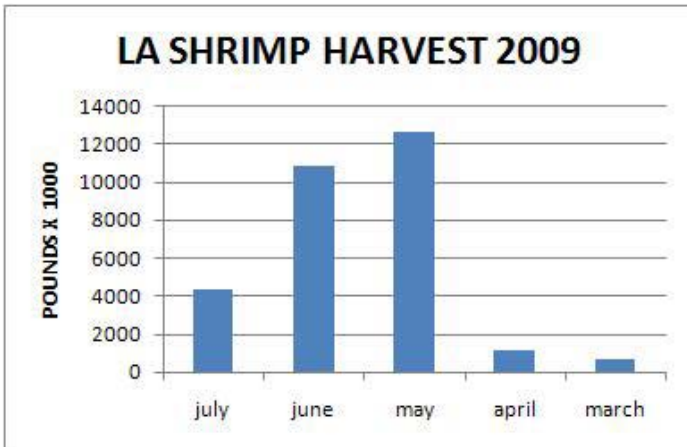
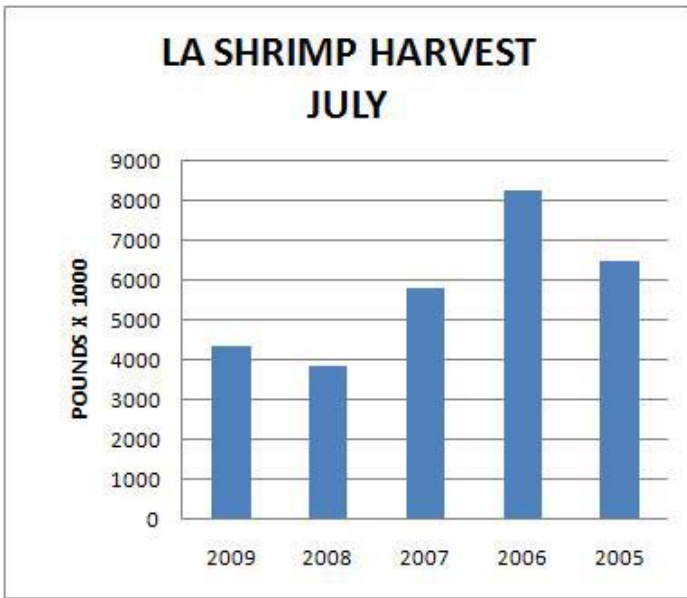
Anyone interested in serving on the advisory panel should submit a letter and resume to: Phyllis Miranda, Gulf of Mexico Fishery Management Council, 2203 N. Lois Avenue, Suite 1100, Tampa, FL 33607. Materials may also be faxed to: 813-348-1711; or e-mailed to [Phyllis.miranda@gulfcouncil.org](mailto:Phyllis.miranda@gulfcouncil.org). Resumes and letters must be received no later than close of business Oct. 13, 2009.

### **Louisiana Shrimp Watch**

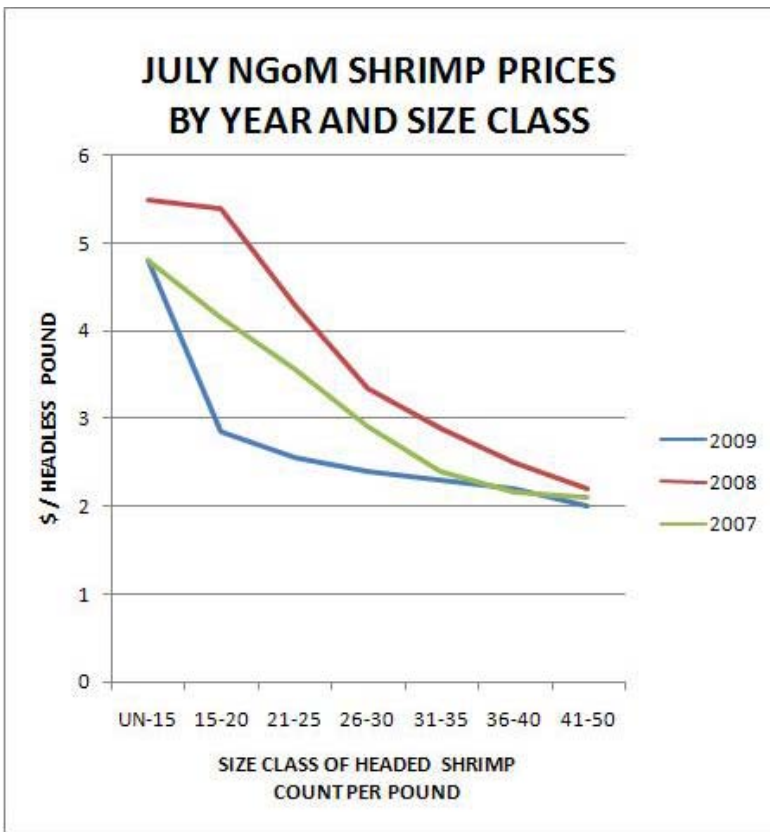
Louisiana specific data portrayed in the graphics are selected from preliminary data posted by NOAA on their Website. All data portrayed are subject to final revision and approval by NOAA. Shrimp landings are ex-vessel prices, inclusive of all species harvested. Missing, inadequate or withheld reports are portrayed as 'zero' in these graphics. Price graphics reflect central Gulf states only (Texas and Florida are reported independently). For more information, please refer to: [http://www.st.nmfs.noaa.gov/st1/market\\_news/index.html](http://www.st.nmfs.noaa.gov/st1/market_news/index.html)

- Rusty Gaudé









### Underwater Obstructions

In accordance with the provisions of R.S. 56:700.1 et. seq., notice is given that three claims in the amount of \$9,309.48 were received for payment during the period July 1, 2009 - July 31, 2009.

There were three claims paid and 0 claims denied.

Latitude/Longitude Coordinates of reported underwater obstructions are:

29 23.940	91 44.460	VERMILION
29 24.387	89 39.339	PLAQUEMINES
29 54.683	89 50.564	ST. BERNARD

A list of claimants and amounts paid can be obtained from Gwendolyn Thomas, administrator, Fishermen's Gear Compensation Fund, P.O. Box 44277, Baton Rouge, LA 70804, or call (225)342-0122

## THE GUMBO POT

### Crab Soup

*Courtesy Uncle Larry Roussel*

#### Use a 5 quart pot

- 1 stick of butter (salted or unsalted)
- 1 small white onion (finely diced)
- 1 (15.5 oz.) can of your favorite brand of white corn
- 2 (10 &  $\frac{3}{4}$  oz.) cans Campbell cream of mushroom soup
- 1 pound of blue crab claw meat (be sure to pick thru for pieces of crab shell)
- 1 pint of  $\frac{1}{2}$  and  $\frac{1}{2}$
- 2 cans evaporated milk
- $\frac{1}{2}$  teaspoon of salt
- $\frac{1}{2}$  teaspoon of white pepper (optional)
- 1 teaspoon Zatarain's liquid crab boil

#### Directions

1. On medium heat, melt butter, then add onion & corn and cook down until the onion clears and the water from the corn evaporates, (about 15 minutes,) stir often.
2. Add mushroom soup and crabmeat and cook down for 5 more minutes and continue to stir often.
3. Add the half and half, evaporated milk, salt, pepper and Zatarain's liquid crab boil and cook on low heat for 20 to 30 minutes.

Note: When you add the milk, be very careful not to scorch the bottom of the pot.

Also note: This is a recipe where deviation not a problem.

---



For more information, contact your local extension agent:



**David Bourgeois** – Area Agent (Fisheries)  
Lafourche & Terrebonne Parishes  
Phone: (985) 873-6495  
E-mail: dbourgeois@agctr.lsu.edu

**Thu Bui** – Assistant Extension Agent, Fisheries  
St. Mary, Iberia, and Vermilion Parishes  
St. Mary Parish Court House  
500 Main Street Rm. 314  
Franklin, LA 70538-6199  
Phone: (337) 828-4100, ext. 300  
Fax: (337) 828-0616  
TBui@agcenter.lsu.edu

**Carol D. Franze** – Associate Area Agent  
Southeast Region  
21549 Old Covington Hwy  
Hammond, LA 70403  
Phone: (985) 543-4129  
Email: cfranze@agcenter.lsu.edu

**Albert 'Rusty' Gaudé** – Area Agent, Fisheries  
Plaquemines, St. Bernard, and Orleans Parishes  
Phone: (504) 433-3664 ext. 1242  
E-mail: agaude@agctr.lsu.edu

**Thomas Hymel** – Watershed Educator  
Iberia, St. Martin, Lafayette, Vermilion,  
St. Landry, & Avoyelles Parishes  
Phone: (337) 276-5527  
E-mail: thymel@agctr.lsu.edu

**Lucina Lampila** – Associate Professor  
111 Food Science Bldg.  
Louisiana State University  
Baton Rouge, LA 70803-7507  
Phone: (225) 578-5207  
Fax: (225) 578-5300  
llampila@agcenter.lsu.edu

**Kevin Savoie** – Area Agent (Southwest Region)  
Natural Resources-Fisheries  
Phone: (337) 475-8812  
E-mail: ksavoie@agctr.lsu.edu

**Mark Schexnayder** – Coastal Advisor (Fisheries)  
St. John, St. Charles, Jefferson & parts of Orleans Parishes  
Phone: (504) 838-1170  
E-mail: mschexnayder@agctr.lsu.edu

**Mark Shirley** – Area Agent (Aquaculture & Coastal Resources)  
Jefferson Davis, Vermilion, Acadia, St. Landry, Evangeline,  
Cameron, Calcasieu, Lafayette, Beauregard, & Allen Parishes  
Phone: (337) 898-4335  
E-mail: mshirley@agctr.lsu.edu

#### Research and Extension Programs

Agriculture  
Economic/Community Development  
Environment/Natural Resources  
Families/Nutrition/Health  
4-H Youth Programs

For questions or comments about a story, contact Lagniappe editor Glenn Thomas at [gthomas@lsu.edu](mailto:gthomas@lsu.edu).

**R. Glenn Thomas**, Ph.D.  
Director, Marine Extension  
234 Sea Grant Bldg.  
Louisiana State University  
Baton Rouge, LA 70803  
Phone: (225) 578-6290  
Fax: (225) 578-6331  
E-mail: [gthomas@lsu.edu](mailto:gthomas@lsu.edu)



A State Partner in the Cooperative Extension System

The LSU Agricultural Center is a state-wide campus of the LSU System and provides equal opportunities in programs and employment. Louisiana State University and A. & M. College, Louisiana police governing bodies, Southern University and A&M College, Department of Agriculture cooperating.