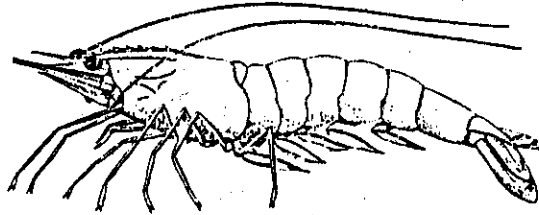


SEA GRANT PROGRAM



LAGNIAPPE

DOUBLE-RIG SHRIMPING ILLEGAL IN WEST JEFFERSON

The one-year suspension resolution which allowed the use of two trawls in Jefferson, Lafourche and Terrebonne will expire before white shrimp season. A bill and a resolution were introduced to extend this provision, but both failed to pass. What did pass was an amendment that allows the use of two trawls in Jefferson Parish east of the Mississippi River.

This means that effective on signature of the governor, it will be illegal to use two trawls in inside waters in all of Jefferson Parish west of the Mississippi River and all of Lafourche and Terrebonne Parishes.

TED UPDATE

A three judge federal panel has ruled against the state of Louisiana's appeal on the TED lawsuit. This means that effective one minute before midnight on August 31, all shrimp boats over 25 feet in length fishing outside the col-regs line must use TEDs in their trawls.

Unless the state of Louisiana chooses to appeal the case to the Supreme Court, this will be the final court ruling.

SHRIMP TRAWL DOOR MEETING

The Louisiana Cooperative Extension Sea Grant Program will be sponsoring an educational program on new trawl doors, on Wednesday, August 3 at 7 p.m. at the Lafitte Fire Station in Lafitte, Louisiana.

Trawl door efficiency is very important both because they spread the net, but also from the stand point of fuel efficiency. Duncan Amos, gear development specialist with Georgia Sea Grant, will present the program. Duncan has worked with shrimp and fish trawlers throughout Europe and the United States.

Duncan will discuss the new slotted wooden door, vee doors, polyvalent doors and the cambered door. Some of these doors are supposed to be far more efficient. For example, the slotted wooden door is supposed to give the same spread to a trawl with 20-30% less drag.

SEAFOOD DEALERS WARNED BY DEPARTMENT

In a July news release, the Department of Wildlife and Fisheries, reminds Louisiana wholesale and retail fish dealers that they may buy only from commercial fishermen and validly licensed dealers. Lt. Col. Winton Vidrine of the Enforcement Division says that dealers must be especially careful not to buy from recreational fishermen.

Dealers also are required to maintain records of their transactions for three years and to make these records available for inspection by the department.

The records must be kept in English. They include: 1) records of the quantity and species of fish acquired, the date the fish was acquired, and the name and license number of the commercial fisherman, the wholesale/retail dealer or the out-of-state seller from whom the fish was acquired, 2) records of the quantity and species of the fish sold, the date the fish was sold, and the name and license number of the person to whom the fish was sold. When sold to the consumer, the records shall indicate the quantity, species and date, and shall state that the fish was sold to the consumer.

MARINE LITTER CAMPAIGN

Recently five sportfishing rodeos in Louisiana have agreed to include a marine pollution awareness program in their events. L.S.U. Sea Grant and U.S. Minerals Management Service have been particularly active in working on the litter and trash problem.

Although they are only one group of the many marine users in the state, salt-water recreational boaters are estimated to produce 3,800 tons of trash annually. According to Mike Liffmann, assistant director of Louisiana Sea Grant, "we estimate that each person aboard a saltwater recreational fishing boat is generating one pound of trash per day. With an estimated 100,000 recreational boats in the state, awareness by this group is vital to cleaning up our coastal pollution problems."

Source: News from Sea Grant

CHANGE IN HANG FUND RULES

Effective August 20, 1988, anyone who wants to make a claim on the Fishermen's Gear Compensation Fund (State Hang Fund) for lost or damaged trawls or vessels, will have to use his income tax return to prove that he makes at least 50% of his income from commercial fishing. In the past, a statement from a seafood dealer was often used instead of tax forms. This will no longer be allowed. What will be required, are copies of the following:

- 1) the front page of your state income tax form
- 2) the front and back page of the 1040 federal tax form
- 3) the front page of the federal schedule C form

Any Louisiana resident who makes at least 50% of his income from commercial fishing and suffers loss or damage to his gear or vessel in the Louisiana coastal zone is eligible for compensation. Claims should be made within 30 days of the damage by calling 1-342-0122 in Baton Rouge.

SEAFOOD IMPORTS AND EXPORTS

Both imports and exports of edible fisheries products set new national records in 1987. U.S. imports were \$5.7 billion which was \$897.7 million more than 1986.

U.S. fisheries exports of domestic products were 782.9 million pounds, worth a record \$1.6 billion.

<u>1987 Imports</u>		
shrimp	478.3 million lbs.	\$1,710,224,000
fish fillets and steaks	621.0 million lbs.	\$1,115,123,000
block frozen fish	403.6 million lbs.	\$ 509,358,000
fresh and frozen tuna	572.5 million lbs.	\$ 330,759,000
canned tuna	211.7 million lbs.	\$ 206,920,000
<u>1987 Exports</u>		
fresh and frozen salmon	296.7 million lbs.	\$ 608,566,000
cured salmon and herring rolls	23.7 million lbs.	\$ 94,819,000
canned salmon	35.9 million lbs.	\$ 85,816,000
fresh and frozen herring	95.0 million lbs.	\$ 84,029,000
shrimp	24.3 million lbs.	\$ 83,115,000
butterfish	7.6 million lbs.	\$ 10,457,000
eels	5.8 million lbs.	\$ 6,347,000
mullet	2.7 million lbs.	\$ 1,689,000

Source: Imports and Exports of Fishery Products, Annual Summary 1987. National Marine Fisheries Service

NEW NATIONAL RECREATIONAL FISHERIES POLICY

The National Recreational Fisheries Policy, a 15-page collection of principles, goals, and objectives designed to improve and safeguard sportfishing in the United States, has been officially adopted by more than 50 public and private organizations. The new policy is also strongly supported by President Ronald Reagan and Vice President George Bush.

U.S. Fish and Wildlife Service director Frank Dunkle stated that "the Service was proud to play a leadership role in helping guide the creation of the policy, and one would not shrink back when it became a reality."

Final copies of the signed National Recreational Fisheries Policy will be available early this fall from the Assistant Director--Fisheries, U.S. Fish and Wildlife Service, Washington, D.C. 20240.

NEW SEAFOOD TRADE SHOW

The seafood business is changing rapidly. It is becoming a national and international business and people are eating more seafood everywhere. Seafood dealers are also using seafood trade shows more than ever to market their products.

This year a new national seafood show is being added to those already in existence in Boston, Long Beach and Tampa. The New York Seafood Show will take place on October 25 and 26, 1988 in Manhattan. More than \$2 billion worth of fish and seafood is sold each year in the New York area, which makes it a sizable market. According to most reports, New York is the largest single consumer of softshell crabs.

For more information on this show, contact James D. O'Malley (617) 542-2858.

AQUACULTURE VIDEO TAPES

The Louisiana Cooperative Extension Service has completed four video programs for people interested in redfish, alligator, crawfish and catfish aquaculture. These tapes are one-half inch, VHS videotape, standard for home viewing and cost \$30.00 each. You may use the form below for ordering.

Check the tape(s) you'd like to receive; make checks payable to the Louisiana Cooperative Extension Service:

___ Alligator Aquaculture -- \$30.00 (length, 18:35)

___ Catfish Aquaculture -- \$30.00 (length, 18:57)

___ Crawfish Aquaculture -- \$30.00 (length, 21:21)

___ Redfish Aquaculture -- \$30.00 (length, 23:00)

Total enclosed: \$ _____

Your name: _____

Mailing address: _____

Telephone number: _____

Send completed order form to:

John Brooks
Louisiana Cooperative Extension Service
128 Knapp Hall, LSU
Baton Rouge, LA 70803

If you have any questions, contact John Brooks at (504) 388-2263.

THE GUMBO POT

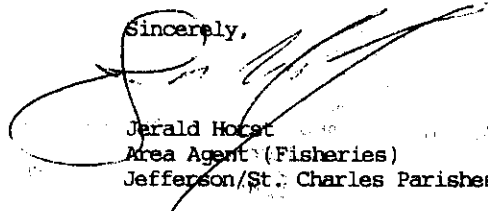
She-Crab Soup

She-crab soups are an east coast tradition just like gumbos are in Louisiana. I got this recipe from Wayne Wescott, who is a marine advisory agent in North Carolina. Be sure to use large mature female crabs because you will want to crumble the eggs into the soup. Its a lot different than traditional Cajun cooking, but I think you'll enjoy it.

- | | |
|--------------------------------|------------------------------|
| 1 lb. crabmeat with eggs | 2 tsp. worchestershire sauce |
| 10 oz. frozen mixed vegetables | 1/4 cup sherry |
| 3 Tbsp. margarine | 1/2 tsp. white pepper |
| 3 Tbsp. flour | 1/2 tsp. salt |
| 6 cups skim milk | 1/4 tsp. seafood seasoning |
| 2 tsp. soy sauce | 1/4 tsp. thyme |
| | 1 large bay leaf |

Melt margarine in a large sauce pan over low heat. Add flour gradually and blend well. Add milk 1 cup at a time, stirring continuously until well blended. Add sauces, sherry and seasonings. Simmer, covered, 35-45 minutes. Add vegetables. Cook over medium heat for 10 minutes. Stir in the crabmeat and cook over medium heat until hot. Serves 4.

Sincerely,



Jerald Hotst
Area Agent (Fisheries)
Jefferson/St. Charles Parishes

JH/kwj

LOUISIANA COOPERATIVE EXTENSION SERVICE PROVIDES EQUAL OPPORTUNITIES IN PROGRAMS AND EMPLOYMENT. LOUISIANA STATE UNIVERSITY AND A. & M. COLLEGE, LOUISIANA PARISH GOVERNING BODIES, SOUTHERN UNIVERSITY, AND UNITED STATES DEPARTMENT OF AGRICULTURE COOPERATING

LOUISIANA COOPERATIVE EXTENSION SERVICE
LSU AGRICULTURAL CENTER
U.S. DEPARTMENT OF AGRICULTURE
LOUISIANA STATE UNIVERSITY AND A. & M. COLLEGE
UNIVERSITY STATION, BATON ROUGE, LA 70803-1900

OFFICIAL BUSINESS

Penalty for Private Use, \$300