

LOUISIANA SEA GRANT



**Michael M. Liffmann –
Associate Executive Director**



Jon W. Bell – Associate Professor (Seafood Technology)

- **Seafood technologists**
 - **Development, delivery training workshops for Wild American Shrimp: shrimp quality certification to differentiate and market domestically harvested shrimp for increased price and revenue**
- **Individual technical assistance shrimp program in Louisiana**
 - **Technology transfer of best handling practices: retail quality shrimp and marketing opportunities for above-commodity prices**
- **Develop tools to evaluate and describe sensory characteristics of Gulf oysters**
- **Sanitation and HACCP training workshops**



David Bourgeois - Associate Area Agent (Fisheries)



- Coastal Roots: wetlands plant seedling nursery program for middle/high schools
 - 15 schools participating
- 4-H sportfishing program: State-wide train-the-trainer sessions
 - 6 parishes participating
- Commercial fishing and charter guide fisheries:
 - Recovery and educational programs
 - Trawling demonstration project
- Recreational pond workshops
- Crawfish production pond workshops

Rex Caffey

- Associate
Professor
(Wetlands &
Coastal
Resources)



- Economic assessment of fisheries infrastructure damages from Hurricane Katrina and Rita
- Advisory to La Fishing Community Recovery Coalition
- Cost-efficacy of coastal wetland restoration projects: CWPPRA Program
- Economic assessment rapid-land building technologies; coastal restoration
- Development of the Center for Natural Resource Economics & Policy
- Planning “2nd National forum on Socioeconomic Research and Extension in Coastal Systems”
- Survey characterization: wetland mitigation banking industry
- Educational programs in fisheries transitions:
 - Professionalization/certification
 - Organizational/cooperative efforts
 - Capacity/effort reduction/resource privatization
- “Louisiana Lighthouse” coastal outreach/education

Hamady Diop – Assistant Professor, Research

(Fisheries & Economics)



- Assessment of the social and economic impacts of Hurricanes Katrina and Rita on the Louisiana fishing sector
 - Document economic losses from hurricanes Katrina and Rita
 - Concepts for rebuilding profitable and resource-conserving Gulf fishing industries
- Intensive technical assistance
 - Advise LA shrimp fishermen
 - Economic issues and solving problems associated with low quality/low prices.
- Review of management alternatives for Louisiana-specific commercial fisheries
 - Develop extension products for fishermen and resource managers
 - Management alternatives for coastal Louisiana fisheries
- Gulf of Mexico grouper fleet dynamics

Justin Farrell — Ports Specialist

FOCUS AREAS

- Post-Hurricane recovery of ports;
- Vessel salvage & marine debris;
- NOAA Portfields initiative;
- Environmental impacts of LNG development & LNG traffic.



OUTCOMES

- **Recovery:**
 - Status whitepaper, numerous presentations, & website work;
- **Vessel salvage & marine debris:**
 - NOAA MDP grant/LDNR removal (\$100K + \$250K);
 - CZ07 Paper/presentation
 - GOM Synthesis (GEOG 7973)
- **Southern LA Regional Portfields Project:**
 - Liaison to Ports Association (PAL) & Port of Baton Rouge
 - Strategic Business Plan for LA Ports (\$600K EDA App.)
- **LNG:**
 - TCS20 Panel/paper

- **NEW! Fisheries Infrastructure**

Albert “Rusty” Gaudé

Fisheries (Plaquemines, St.
Bernard, Orleans Parishes)



➤ Post-K Focus

➤ Hurricane recovery

- Vessel reclamation
- FEMA recovery team
- Governmental financial assistance
- Private funding of aid programs
- Mitigation: local and national impacts future catastrophic events
- Long-term fishery development
- Fishery/waterway liaison to parish administrations
- LSU office restoration

➤ Pre-K activities:

Diversity in fishery development
Marine bait industries
Commercial market development
Urban fishery development
Sustainable fishery principals
Mariculture/aquaculture
Wetlands education/restoration



HURRICANE RECOVERY:

THERESA'S SEAFOOD DOCK

identification...1 week

action.....18 months

resolution.....priceless

Thomas Hymel – Watershed Educator

Iberia, St. Martin, Lafayette, Vermilion, St. Landry, & Avoyelles
Parishes

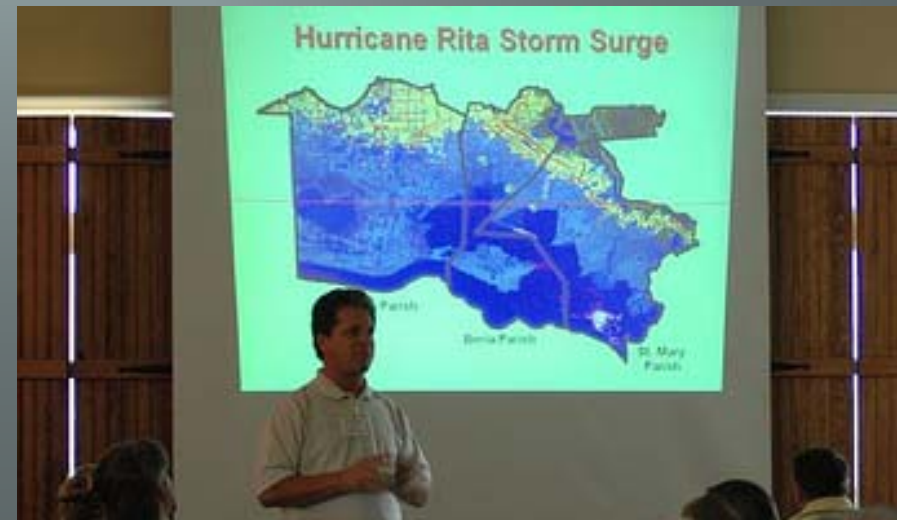
- Storm surge inundation mapping

 - Agriculture impacts

 - Coastal communities

- Storm surge vulnerability

- SMART coastal community
development



Roy Kron – Communications Manager



- Online, searchable research database
- Online experts database
- Presidents' Forum on Meeting Coastal Challenges Webcast
- *Sister Storms* documentary
- Online GIS applications presentations

Brian LeBlanc – Associate Professor (Watershed Management) Statewide, Natural Resources Project

- Mitigation of non-point source pollution through education and applied research
- Coastal and near-coastal audiences: ag. producers, foresters, water based recreational users, suburban/urban homeowners, and state and local government officials



No Photo Available

- Significant Resemblance: Likely Father of Anna Nicole's Baby

Paula Ouder – Editor



NOAA Gulf of Mexico Marine Debris Project – Outreach

➤ side scan sonar @:

<http://gulfofmexico.marinedebris.noaa.gov>

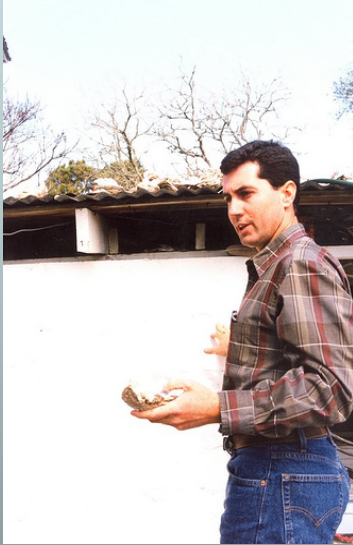
➤ interactive maps, IMS, GPS coordinates

➤ Clean Marinas

➤ Chandeleur Islands Web film

Kevin Savoie

Area Agent (SW Region)
Natural Resources - Fisheries



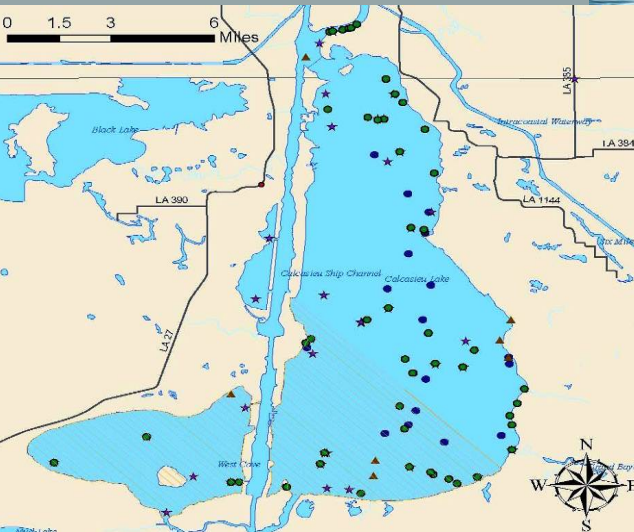
Hurricane Rita impacts on Cameron fisheries



A photograph of a harbor scene with several fishing boats docked at a wooden pier. The boats are covered with green tarps, and the water is calm. A large crane is visible in the background.

[illegible]

Marine Debris Program



**Volunteers
marked and
mapped
obstructions
for removal**



Mark Schexnayder – Coastal Advisor (Fisheries)

- We-KARE.org:
 - Direct volunteers fisheries/environmental recovery projects
- Countless meetings about what to do if aid \$\$ available
 - Still waiting for \$\$
- Coordinate w/agencies on vessel recovery
 - Vessels that have not been recovered
 - recovered but un-repaired
 - Motors, rigging, public infrastructure
- Private groups: Shell, Operation Blessing, Alaska Sea Grant, Kellogg
 - Creative ways to speed recovery
 - Ice plants, “micro-grant” programs, crab shedding system replacement, seafood dock cleaning
- Wetland, urban fishing recovery in New Orleans City Park, Bayou St. John and Lake Pontchartrain
 - Est. wetland plant material center for volunteer planting projects
 - Fish stocking, debris removal, non-native removal, access improvement, native plantings





Mark Shirley

Area Agent (Aquaculture & Coastal Resources)

Jefferson Davis, Vermilion, Acadia, St. Landry, Evangeline,
Cameron, Calcasieu, Lafayette, Beauregard, & Allen Parishes

➤ Aquaculture

- Crawfish and alligator farmers
- Recreational fish ponds
- Tilapia, prawns, ornamental ponds

➤ Marsh Maneuvers

- Coastal ecology camp for 4H high school students
- 4 weeks of camp in July

➤ Coastal Fisheries

- Educational programs
- Shrimpers and crabbers
- High % Vietnamese

➤ Coastal Restoration

- Coastal landowners, local government
- CWPPRA, CIAP, CPRA, other

Glenn Thomas – Associate Professor

(Fisheries Specialist)



- Coastal Restoration and Fisheries
- Aquatic Invasive Species
- Atchafalaya Basin
 - Wild Crawfish Fishery
- Fish News
- Industry transitions
 - Leadership development
- MRE Preparation Class